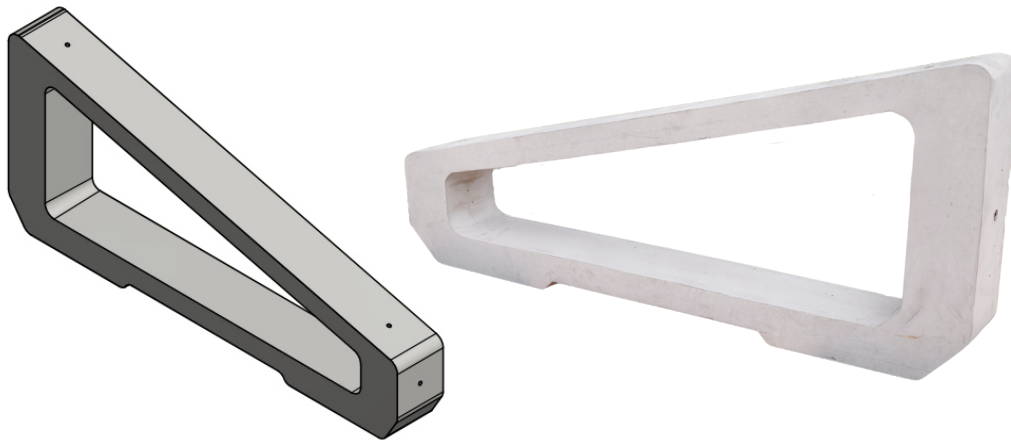
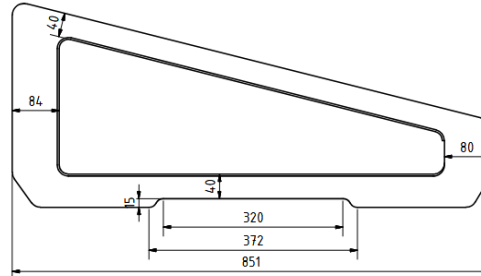
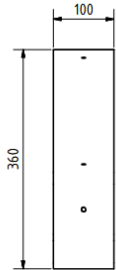




SUNBLOCKS
CONCRETE STRUCTURES FOR PV PANELS

FB14



BLOCK WEIGHT
25 KG



TILT ANGLE
14°



NUMBER OF
PIECES PER
PALLET
32



EURO PALLET
DIMENSIONS
120 × 80 cm



MATERIAL PROPERTIES

Concrete class C40/50, self-compacting
Resistance to environmental influence XF4
according to EN 206-1

REINFORCEMENT PROPERTIES

Reinforcement steel B500, diameter \varnothing 6 mm
Welded M8 anchor nuts

NORMATIVE REFERENCE

The concrete composition (C40/50) and the B500 reinforcement comply with the requirements of EN 1992-1-1

TOTAL WEIGHT
incl. EURO pallet
825 KG

